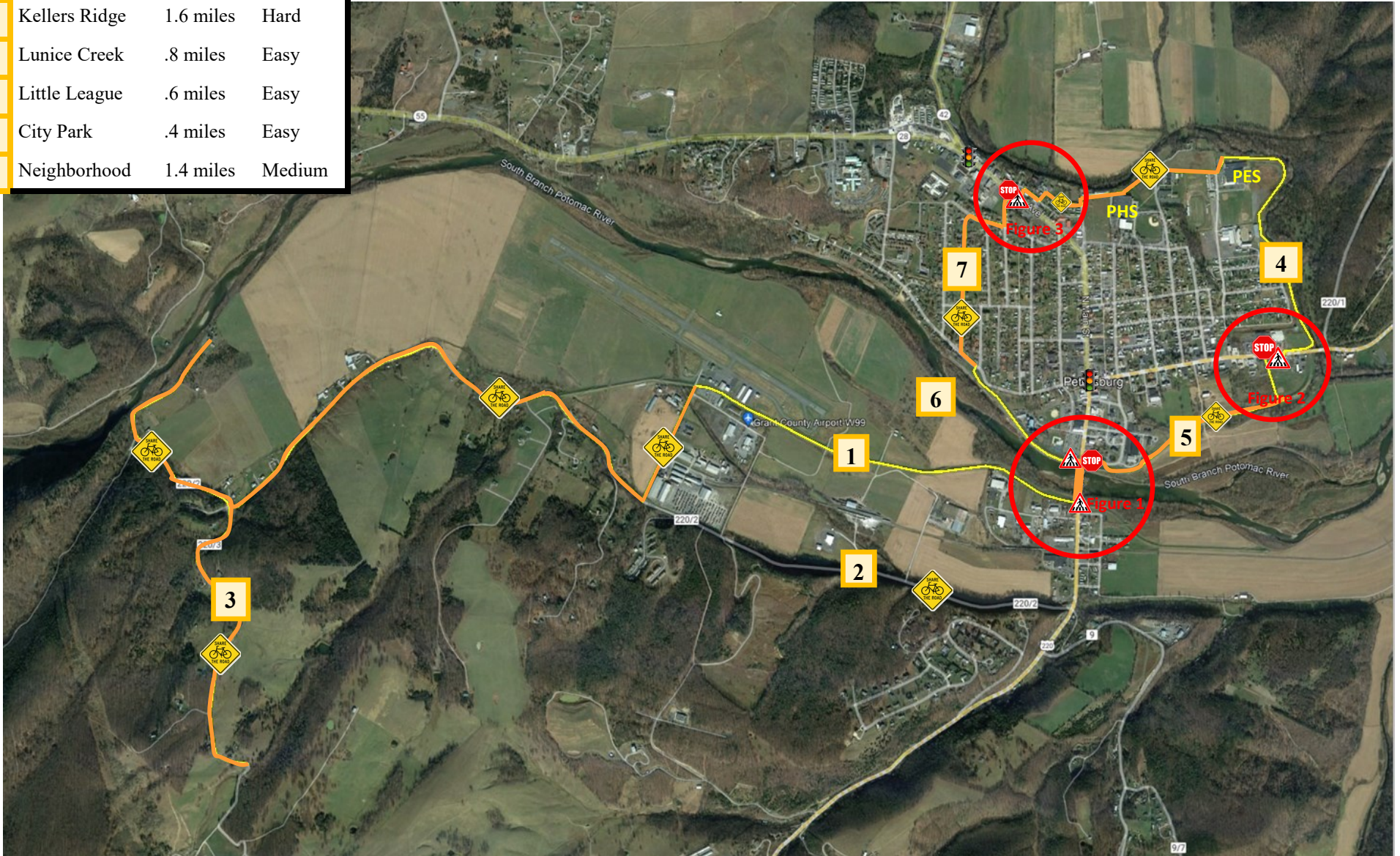


# Main Street to the Mountains - 13 Mi. Expanded Trail System

January 2022 Addendum to  
Petersburg, Grant County, West Virginia  
Proposed Levee Hike and Bike Trails

## Trails

1	Airport Levee	1.2 miles	Easy
2	Johnson Run	2.7 miles	Easy
3	Kellers Ridge	1.6 miles	Hard
4	Lunice Creek	.8 miles	Easy
5	Little League	.6 miles	Easy
6	City Park	.4 miles	Easy
7	Neighborhood	1.4 miles	Medium



## Legend



Share the Road



Stop Sign



Pedestrian Crossing

Road Trail

Levee Trail

Figure 1

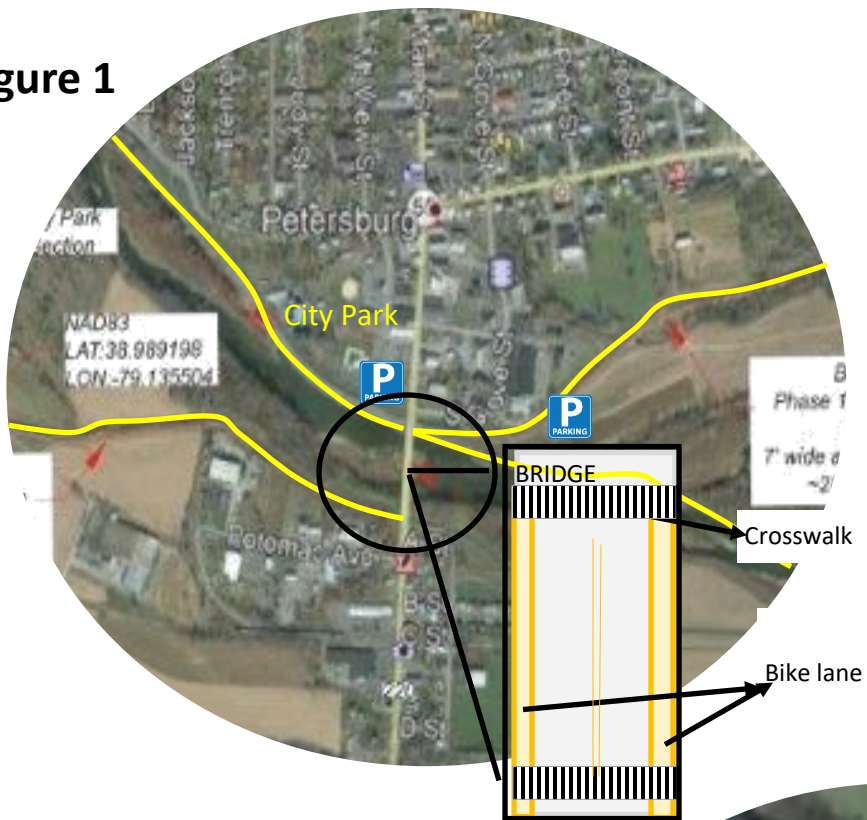


Figure 2



Figure 3

